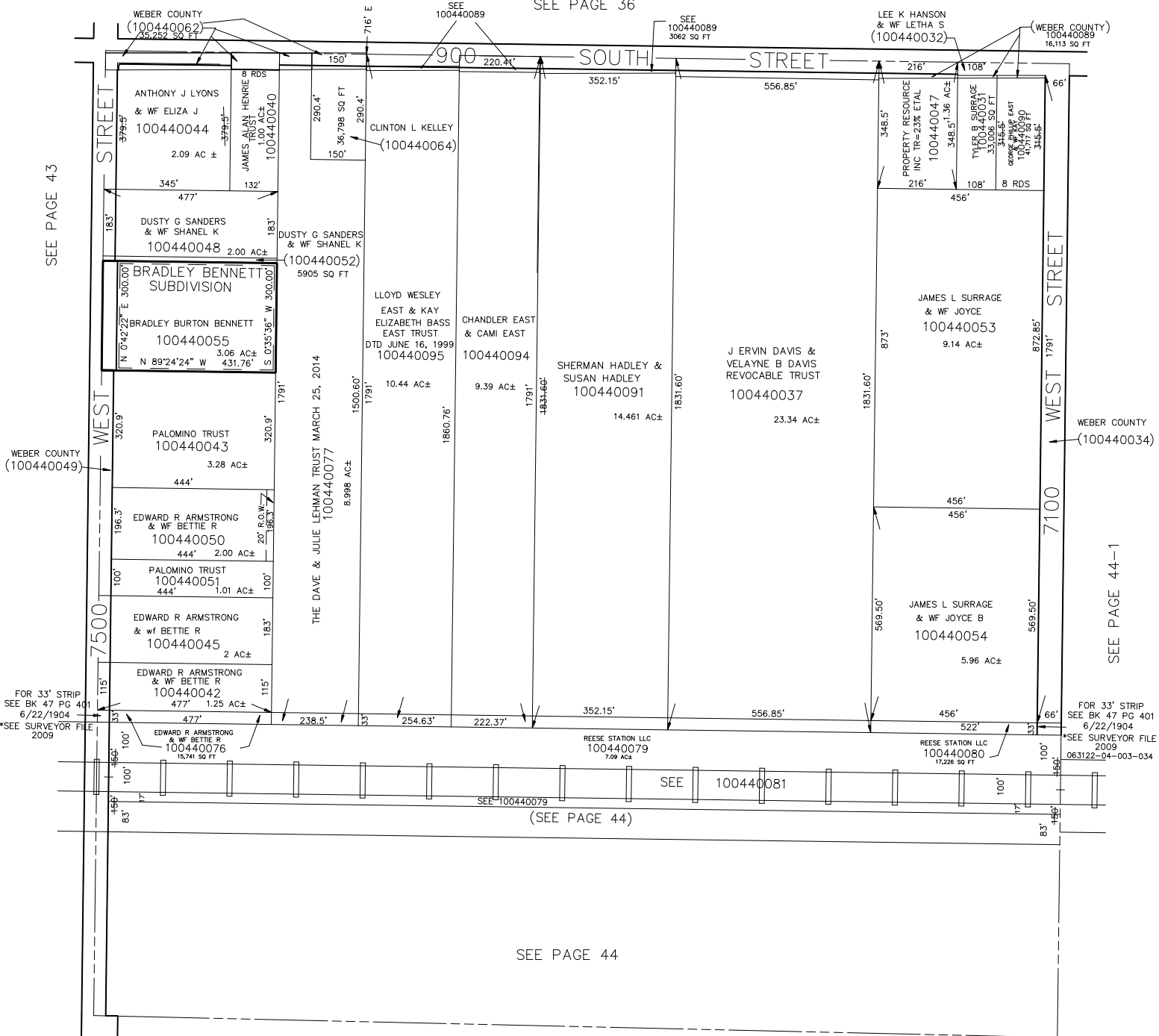


N.W. 1/4
SECTION 23, T.6N., R.3W., S.L.B. & M.

TAXING UNITS: 303

IN WEBER COUNTY
SCALE 1" = 200'

SEE PAGE 36



SEE PAGE 43

WEBER COUNTY (100440049)

WEBER COUNTY (100440034)

FOR 33' STRIP
SEE BK 47 PG 401
6/22/1904
*SEE SURVEYOR FILE
2009

FOR 33' STRIP
SEE BK 47 PG 401
6/22/1904
*SEE SURVEYOR FILE
2009
06.3122-04-003-034

SEE PAGE 44-1

SEE PAGE 44

SEE PAGE 44